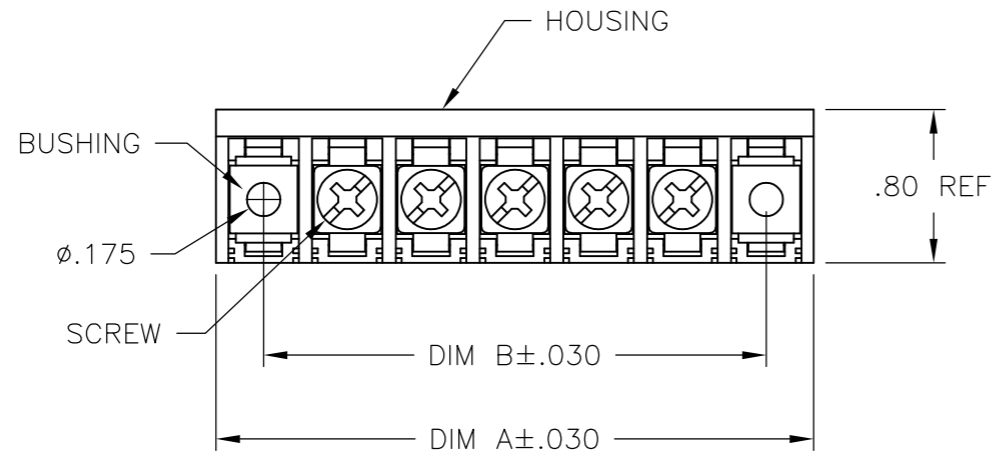


THIS DRAWING IS UNPUBLISHED. RELEASED FOR PUBLICATION  
 © COPYRIGHT BY TYCO ELECTRONICS CORPORATION. ALL RIGHTS RESERVED.

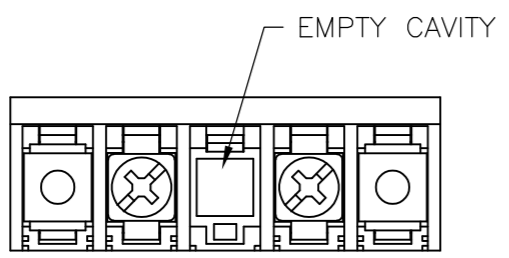
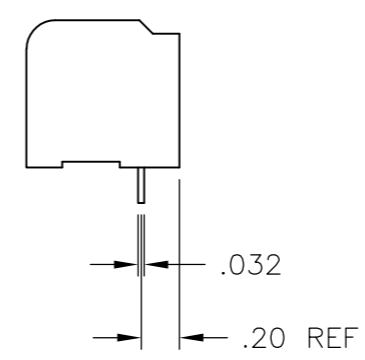
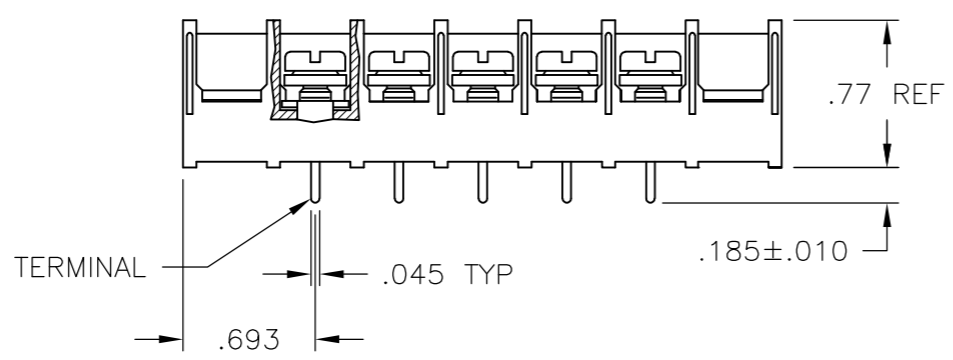
| LOC | DIST | REVISIONS                 |         |     |      |
|-----|------|---------------------------|---------|-----|------|
| P   | LTR  | DESCRIPTION               | DATE    | DWN | APVD |
| FT  | 0    |                           |         |     |      |
|     | E    | REVISED PER ECO-08-010814 | 15MAY08 | HMR | MZ   |



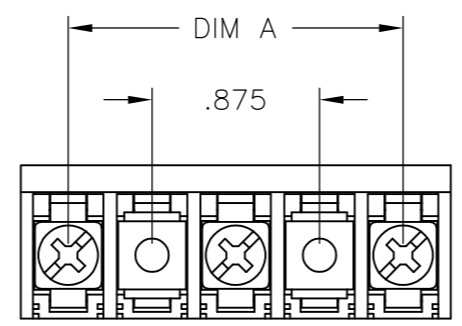
MATERIALS:  
 HOUSING: THERMOPLASTIC, UL94V-0, BLACK.  
 TERMINAL: BRIGHT TIN PLATED COPPER ALLOY.  
 SCREWS: 8-32 ZINC PLATED STEEL.

ELECTRICAL:  
 CURRENT RATING: 30A  
 VOLTAGE RATING: 600V  
 WIRE RANGE: 10-18 AWG (UL)  
 10-22 AWG (CSA)

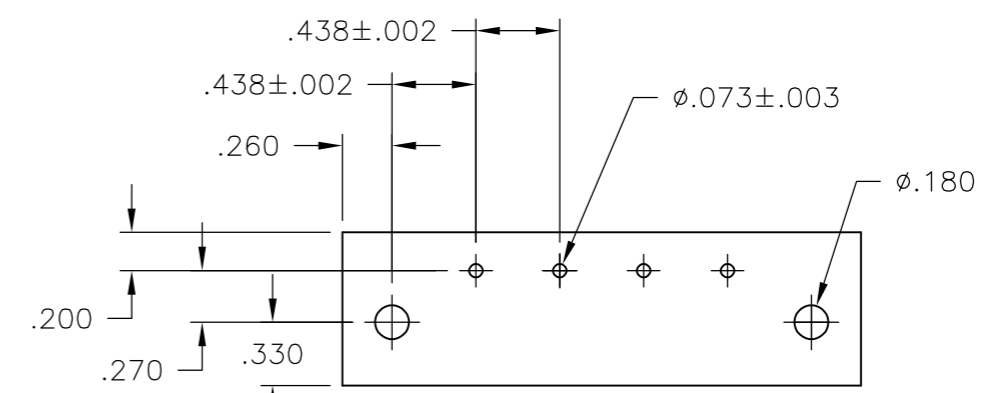
MECHANICAL:  
 RECOMMENDED TORQUE: 20 IN-LB.  
 OPERATING TEMP.: -40°C TO +120°C.



1546156-1



7-1437657-3



RECOMMENDED PCB LAYOUT

|  |            |                              |   |               |         |       |           |       |            |       |         |        |          |              |                      |  |
|--|------------|------------------------------|---|---------------|---------|-------|-----------|-------|------------|-------|---------|--------|----------|--------------|----------------------|--|
| THIS DRAWING IS A CONTROLLED DOCUMENT.   |            | DWN<br>S SCHLEGEL<br>2/25/03 | Tyco Electronics Corporation<br>Harrisburg, PA 17105-3608 |               |         |       |           |       |            |       |         |        |          |              |                      |  |
| DIMENSIONS:<br>INCHES  |            | CHK<br>H WAKEEM<br>2/25/03   |   |               |         |       |           |       |            |       |         |        |          |              |                      |  |
| TOLERANCES UNLESS OTHERWISE SPECIFIED:   |            | APVD<br>H WAKEEM<br>2/25/03  | NAME  |               |         |       |           |       |            |       |         |        |          |              |                      |  |
| <table border="0"> <tr><td>0 PLC</td><td><math>\pm -</math></td></tr> <tr><td>1 PLC</td><td><math>\pm -</math></td></tr> <tr><td>2 PLC</td><td><math>\pm .01</math></td></tr> <tr><td>3 PLC</td><td><math>\pm .005</math></td></tr> <tr><td>4 PLC</td><td><math>\pm -</math></td></tr> <tr><td>ANGLES</td><td><math>\pm 1'</math></td></tr> </table> |            | 0 PLC                        | $\pm -$   | 1 PLC         | $\pm -$ | 2 PLC | $\pm .01$ | 3 PLC | $\pm .005$ | 4 PLC | $\pm -$ | ANGLES | $\pm 1'$ | PRODUCT SPEC | 8PCV-XX-008 ASSEMBLY |  |
| 0 PLC  | $\pm -$    |                              |   |               |         |       |           |       |            |       |         |        |          |              |                      |  |
| 1 PLC  | $\pm -$    |                              |   |               |         |       |           |       |            |       |         |        |          |              |                      |  |
| 2 PLC  | $\pm .01$  |                              |   |               |         |       |           |       |            |       |         |        |          |              |                      |  |
| 3 PLC  | $\pm .005$ |                              |   |               |         |       |           |       |            |       |         |        |          |              |                      |  |
| 4 PLC  | $\pm -$    |                              |   |               |         |       |           |       |            |       |         |        |          |              |                      |  |
| ANGLES   | $\pm 1'$   |                              |   |               |         |       |           |       |            |       |         |        |          |              |                      |  |
| MATERIAL   |            | APPLICATION SPEC             | SIZE  | RESTRICTED TO |         |       |           |       |            |       |         |        |          |              |                      |  |
| -  |            | WEIGHT                       | A3 00779  | -             |         |       |           |       |            |       |         |        |          |              |                      |  |
|  |            | CUSTOMER DRAWING             | CAGE CODE   | DRAWING NO    |         |       |           |       |            |       |         |        |          |              |                      |  |
|  |            |                              | 7-1437657-1   |               |         |       |           |       |            |       |         |        |          |              |                      |  |
|  |            | SCALE                        | SHEET   | REV           |         |       |           |       |            |       |         |        |          |              |                      |  |
|  |            | 1:1                          | 1 OF 2  | E             |         |       |           |       |            |       |         |        |          |              |                      |  |

4

3

2

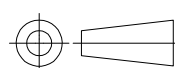
1

THIS DRAWING IS UNPUBLISHED. RELEASED FOR PUBLICATION  
 © COPYRIGHT - BY TYCO ELECTRONICS CORPORATION. ALL RIGHTS RESERVED.

| LOC | DIST | REVISIONS   |      |     |      |  |
|-----|------|-------------|------|-----|------|--|
| P   | LTR  | DESCRIPTION | DATE | DWN | APVD |  |
| FT  | 0    | SEE SHEET 1 | -    | -   | -    |  |

| DIM B | DIM A | NO OF POS | CATALOG NUMBER | TE PART NO  |
|-------|-------|-----------|----------------|-------------|
| 8.312 | 8.822 | 18        | 8PCV-18-008    | 1-1546570-8 |
| 7.875 | 8.385 | 17        | 8PCV-17-008    | 1-1546570-7 |
| 7.437 | 7.947 | 16        | 8PCV-16-008    | 1-1546570-6 |
| 7.000 | 7.510 | 15        | 8PCV-15-008    | 1-1546570-5 |
| 6.562 | 7.072 | 14        | 8PCV-14-008    | 1-1546570-4 |
| 6.125 | 6.635 | 13        | 8PCV-13-008    | 1-1546570-3 |
| 5.687 | 6.197 | 12        | 8PCV-12-008    | 7-1546159-6 |
| 5.250 | 5.760 | 11        | 8PCV-11-008    | 1-1546570-1 |
| 4.812 | 5.322 | 10        | 8PCV-10-008    | 7-1546159-3 |
| 4.375 | 4.885 | 9         | 8PCV-09-008    | 3-796615-1  |
| 3.937 | 4.447 | 8         | 8PCV-08-008    | 2-796615-9  |
| 3.500 | 4.010 | 7         | 8PCV-07-008    | 3-796615-0  |
| 3.062 | 3.572 | 6         | 8PCV-06-008    | 1437658-2   |
| 2.625 | 3.135 | 5         | 8PCV-05-008    | 9-1437657-1 |
| 2.187 | 2.697 | 4         | 8PCV-04-008    | 8-1437657-1 |
| 1.750 | 2.260 | 3         | 8PCV-03-534    | 7-1437657-3 |
| 1.750 | 2.260 | 3         | 8PCV-03-008    | 7-1437657-1 |
| 1.312 | 1.822 | 2         | 8PCV-02-SPCL   | 1546156-1   |
| 1.312 | 1.822 | 2         | 8PCV-02-008    | 1-1437660-6 |

SEE FIGURE  
 SEE FIGURE

|   |        |                              |   |            |               |
|---|--------|------------------------------|---|------------|---------------|
| THIS DRAWING IS A CONTROLLED DOCUMENT.  |        | DWN<br>S SCHLEGEL<br>2/25/03 | Tyco Electronics Corporation<br>Harrisburg, PA 17105-3608 |            |               |
| DIMENSIONS:<br>INCHES   |        | CHK<br>H WAKEEM<br>2/25/03   | NAME  |            |               |
| TOLERANCES UNLESS OTHERWISE SPECIFIED:  |        | APVD<br>H WAKEEM<br>2/25/03  | 8PCV-XX-008 ASSEMBLY                                      |            |               |
|  |        | PRODUCT SPEC                 | SIZE  |            |               |
| 0 PLC ± -<br>1 PLC ± -<br>2 PLC ± .01<br>3 PLC ± .005<br>4 PLC ± -<br>ANGLES ± 1°     |        | APPLICATION SPEC             | CAGE CODE   | DRAWING NO | RESTRICTED TO |
| MATERIAL  | FINISH | WEIGHT                       | A3  | 00779      | G-7-1437657-1 |
| -   |        | -                            |   | -          |               |
| CUSTOMER DRAWING  |        |                              | SCALE   | SHEET      | REV           |
|   |        |                              | 1:1   | 2 OF 2     | E             |